

THURSDAY CLASSES

6:00-10:00 unless otherwise noted

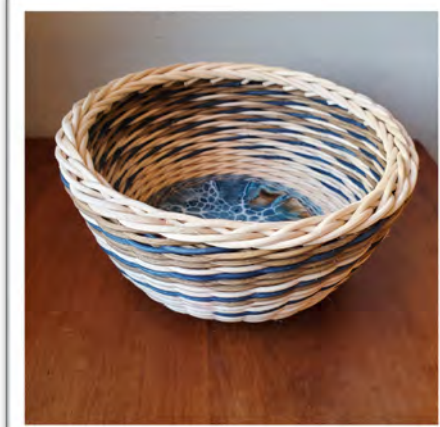


3 WOOLLY TREES ON A LOG \$62 All Levels

MARY ANNUNZIATO 4 hrs. 14”H x10”

Learn to make 1 of 3 small trees to fit on the wood log slab for a piece of the outdoors in your home. You’ll learn to fringe and twirl wool strips to create the 7-row tree. The kit will also include the 6 and 5-row trees.

Log cabin is not included but will be available for extra purchase if desired.



SEVIAH \$55 Beginner
SUSAN BAXTER 4 hrs. 7.3” x 3.3”

Seviah is based on a 4” acrylic bloom base and introduces some of the “FUN”amentals of round reed weaving. Twining will be used to secure the spokes and then 3-rod wale takes the stage. Using different colored reed will produce a “becoming” design on the sides. How color and spoke count can create different designs will be discussed as well as the flexibility of round reed borders. The basket is a great size for keys, remotes, fruit, or anything that tends to “get lost”.



1/2” BRACELET WITH HARDWOOD. \$40. All Levels

DENISE BENDELEWSKI 2 hrs. (6pm-8pm) 1/2” W

Using a metal blank, students will weave a bracelet with a wooden overlay and acrylic endcaps. Students should indicate choice of cherry, walnut, or maple.

THURSDAY CLASSES

6:00-10:00 unless otherwise noted



TOOTH FAIRY

\$90 All Levels

DENISE BENDELEWSKI 2 hrs. (8pm-10pm) 3" x 2"

Using a class mold, students will weave using a natural cane stave and dyed weaver. A handle with a bone knob and a pillow for a tooth. Contact teacher for color choice.



SCIATHOG

\$95 All Levels

BONNIE GALE 4 hrs. 12" dia. X 3"H

This classic Irish potato straining willow frame basket (pronounced 'ski-og') starts with a prepared and dried hoop. Students will place the first set of ribs using God's Eye weaving. Randing weave continues from each side as the other sets of ribs are progressively inserted. A range of naturally processed and colored willow allows students to experiment with design variations. Once all the ribs have been inserted, students are free to finish the basket at their leisure; all necessary materials will be provided.

TOOLS: Sharp pruning shears, 12 inch ruler, an old bath towel, knife, spray bottle and bodkin or awl.



CHRISTMAS STOCKING

\$50 Advanced Beginner

PEGGY MCCARSON 4 hrs. 12" L x 15" H x 2" W

Never too early to dream about Christmas. This old favorite basket is a holiday treat for door or wall. Weavers learn to bend over the spokes to make a toe and leg. The green and red dyed reed add cheer to the basket. Learn how to round over the toe spokes, add embellishments to the heel, add overlays to the leg, and make the reed bow for the middle.

The basket includes a teacher made handle.

THURSDAY CLASSES

6:00-10:00 unless otherwise noted



TRAVELING TOOL TOTE \$68 Adv. Beginner

MARILYN PARR 4 hrs. 10" L x 7" W x 6½" H
w/o handle

This basket was designed to carry tools that are essential when you travel and it is not too big to weigh you down at convention, whether you are weaving or sewing! It is woven with black and natural reed, and when finished, you will weave in a ribbon that looks like a measuring tape. The Amish crafted base will have spokes glued in and weaver-ready for class. The charm is included in the kit.



MINI SURVIVAL BOWL \$35

LINDA SCHERZ 2 hrs. 4 ½" dia. x 2" H

This cute little basket is a great introductory basket to weaving with paracord and learning a matchstick rim. The spokes will be pre-glued in the base by Linda prior to class. Students will have a selection of paracord colors to choose from. A simple weave concentrating on shape. The rim is a basic matchstick rim making a great accent to this little basket,

Tools: scissors or diagonal cutters, small spring type clothespins, small awl, hand towel



TWINED STORAGE BASKET. \$60 Adv. Beg.

CHERYL THOMAS 4 hrs. 8"H x 13.5" Dia.

The Twined Storage Basket is woven on a wood base and has leather handles. The middle section is twined with round reed and flat oval reed. Color choices will be available at class time for the round reed.

THURSDAY CLASSES

6:00-10:00 unless otherwise noted



LICORICE TWIST \$45 Adv. beg.
CHERYL THOMAS 4 hrs. 5”H x 9” Dia.

Licorice Twist is woven on a wood base with flat & flat oval reed. Special techniques include paired triple twining to create arrows. The lashing can be done as single, double or 3/2.



DANCES WITH BEADS \$65 Beg/All Levels
JANE TOLAR 4 hrs. 4” x 5”

Coil a pine needle rim on a leather-laced hand thrown pottery vessel, then release your inner sculptor to create strings of mixed media art with beads and other objects. This class is wonderful for newcomers to learn pine needles skills and for experienced coilers to play in the leather, pine needles and beads.

The instructor will provide a hand thrown and glazed pottery vessel, leather lacing, glycerin treated long leaf pine (*Pinus palustris*) needles, Brazilian poly cord, sewing needles, brass ferrule, plus beads, charms, shells, and random doodads.

TOOLS: Scissors, small needle nose pliers are needed.



EQUILIBRIUM \$65 Intermed. /Adv.

PAMELA WILSON 4 hrs. 12” L x 6” W x 8” H
w/o handle

This basket begins on an oval 4” x 10” wooden base. Students will insert flat stakes in 4 widths into the slot following a template. The basket is woven in a 3/2 twill with 4 widths of weavers. Students will learn how to “reverse” the twill to form a zig zag pattern. The basket completed with a wooden handle and rimmed in the usual manner. Royal Blue or Teal

Usual basket tools including packers, needle nose pliers, angle cutters, scissors, scrapers, cutting board, measuring tape, electrical ties, clips or clothespins.

THURSDAY CLASSES

6:00-10:00 unless otherwise noted



SQUAHAWKY GATHERING \$65 Beginner

JUDY WOBBLETON 4 hrs. 10½" x 7½" x 14½"

This gathering basket is named for a Native American Tribe that settled in my region of North Carolina. Woven on a rectangular base, sporting a plaid design, and finished with an oak handle. A nice basket for beginners.



SHAKER CAT HEAD BASKET \$60 Adv Beg.

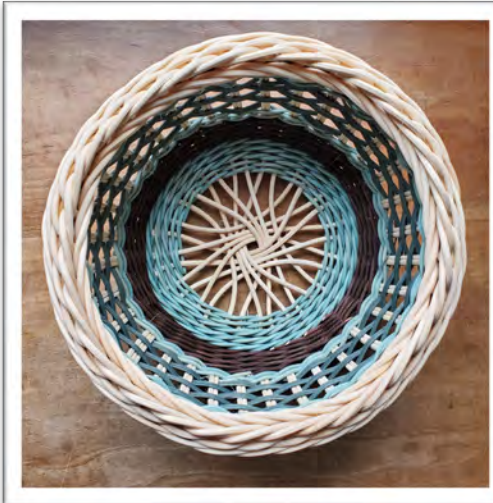
JUDY WOBBLETON 4 hrs. 12" H x 8" dia.

This basket features a woven cat head base. Woven with ¼ inch flat oval reed students will learn my easy technique for creating the cat head. Basket is accented with color and finished with an oak notched handle.

FRIDAY CLASSES

8 hr (8am-5pm)

6 hr (9am-4pm)



VESTA \$65 Adv. Beg. /Inter.

SUSAN BAXTER 6 hrs. 8" x 4.25"

Vesta combines several round reed techniques with flat reed for a unique look. The basket starts with a 3D printed Star Jig to create an open base with equally spaced spokes. Twining, 3-rod wale, and a flat reed twill do the heavy lifting, allowing the weaver time to learn how to create a footer with inserted spokes. The excitement continues by using these additional spokes for a new take on a traditional style border. Star jigs will be available for purchase after project completion.



6" TWILL \$75 All Levels

DENISE BENDELEWSKI 6 hrs. 6" x 6"

Using a class mold and dyed cane staves, students will weave a step-up pattern, finishing with a twill pattern with cane the same color as the staves. Contact the teacher for color choices.



ZARZO \$155 Intermediate/Advanced

BONNIE GALE 8 hrs. 15"W x 16"L x 14"H

A large round basket of Spanish origin. The tray form was originally used by cheesemakers for draining cheeses. Ten thick, long rods are set up vertically parallel in four groups. Thinner rods are used to weave horizontally for the base. Weavers from either end of the base are woven around to create the distinctive style. Basket finished with two Japanese Eye rosettes.

TOOLS: sharp pruning shears, carpenter's folding rule, old bath towel, knife, rapping iron or spoke weight, awl or bodkin.

FRIDAY CLASSES

8 hr (8am-5pm)

6 hr (9am-4pm)



CAT PLUS TWO

\$60

Adv. Beginner

PEGGY McCARSON

6 hrs.

8" dia. x 8"H

Use 3 techniques for this Cat Plus Two basket. Start with a square base and weave 5 rows to make cat heads in the corners. Weave stop-start rows to make a rounded basket. A light flat oval and dark round reeds make a unique 3-rod wale weave in the middle. The top section ends in a rim that uses round reed as a filler and under the rim. The under rim is lashed with cane.



COASTAL CARRY

\$65

All Levels

RAMI McKINNEY

8 hrs.

12" dia. x 6" H

A 6" X 12" stained hoop, a 12" round, stained hoop, dyed and natural rattan, and dyed and natural seagrass are used in this basket. Learn how to make a god's eye, insert ribs, and how to do turn backs with both flat and round fibers, and how to switch fibers while weaving a ribbed style basket. You will be taught to see the shape of the basket while weaving it. Some students may not finish the basket in class. ALL ribs will be inserted, leaving just weaving to be done. TOOLS: basic basket weaving tools.



TURKEY TRACK'N TRAY

\$80

Intermediate

MARILYN PARR

6 hrs.

12.5" dia, 8"H
with handles

A simple round basket with a twist. The spokes will be glued in and weaver ready for class. There is a section in the basket which I titled "turkey tracks." It is a combination of twining and weaving with two colors of round reed. The handles are attached down towards the base of the basket and at the rim, which add a unique look.

FRIDAY CLASSES

8 hr (8am-5pm)

6 hr (9am-4pm)



TWIZZY \$80 Beginner

LINDA SCHERZ 8 hrs. 5½" dia. x 2½" H

Students start with a base with pre-glued spokes. Triple twine with three colors cotton cord in stacking pattern, then twine with soft suede leather. The rim is accented with braided cotton cord rim filler and lashed with cotton cord.

Tools: scissors, spring type clothespins, pencil, spray bottle, small packing tool, knife tool to scarf rims, and tapestry needle with blunt tip



MERRY \$85 Beginner

LINDA SCHERZ 8 hrs. 7" W x 10" L x 3" H

This is a fun basket to weave for the holidays. Linda will have the spokes pre-glued in the 5" x 8" racetrack base prior to class. The design is triple twined with three colors of paracord in a stacking pattern. A regular flat oval rim with paracord rim filler and lashed with flat oval reed to finish your holiday basket. Techniques include triple twining, a stacking pattern, shaping and a regular rim. This is a great basket to create a centerpiece or put a liner in and use as a bread basket.



LARGE CORNER BASKET \$60 Intermediate
CHERYL THOMAS 6 hrs. 9.5"H x 10" W x 12" L

The Large Corner Basket is woven on a 5-sided base resulting in a triangular shaped top. Flat, flat oval and round reeds are used in this basket and there is a pottery embellishment to choose to embellish the front. Different techniques include triple twining, triple twine arrows with reverse arrow weave and 3/2 lashing. There will be a choice of embellishments for the front center piece.

FRIDAY CLASSES

8 hr (8am-5pm)

6 hr (9am-4pm)



BEAD A BASKET CENTER. \$50 Adv. Beg.

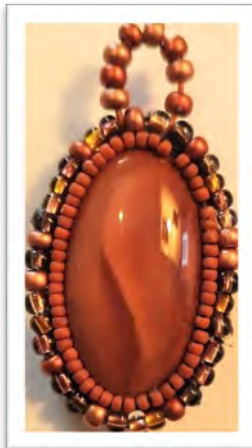
JANE TOLAR 6 hrs. approx. 1 ½" x 2"

Bead a classic cabochon center with three rows of 11/0 seed beads, a showstopper for your next pine needle. Seed beading experience is helpful. Students will leave class with a beaded center on leather, ready to begin their next masterpiece. The mounted cabochon can be adapted to use in a reed basket.



Cabochons to be selected prior to class. Includes beading needle and threads.

Tools: Small sharp scissors, small needle nose pliers, 6" ruler; cordless light /magnifier is helpful.



BEADED CABOCHON PENDANT \$50 Beg.

JANE TOLAR 6 hrs. approx. 1 ½" x 2"

Become a jewelry designer with a choice of center cabochon, plus two rows of seed beads with a custom beaded loop. Basic beading techniques, including beading a bezel row, will create a unique pendant.

Class materials include a cabochon on bead backing, leather backing for the finished pendant and materials for the beaded loop.

Tools: Small sharp scissors, small needle nose pliers, 6" ruler; cordless light /magnifier is helpful.

FRIDAY CLASSES

8 hr (8am-5pm)

6 hr (9am-4pm)



RIBBON AND LACE

\$85 ADVANCED

PAMELA WILSON

8 hrs. 15" W x 2" H

The basket is a mixture of round and flat oval, natural and dyed reed with cotton cord accents. Techniques include three-rod wale, ridge weave, and Japanese diamond weave. Extra spokes will be added as the basket is woven and the rim is triple lashed with cord. The instructor will bring kits in two colors and a variety of cotton cord for the accent color. Students must know how to do three rod wale and step-ups. **Two spoke weights are a must.**

Royal Blue or Terracotta

TOOLS: **2 spoke weights, awl, & needle nose pliers,** plus the usual weaving tools.



BONNET BASKET

\$85 Intermediate

JUDY WOBBLETON

8 hrs. 11 1/2" H x 11" dia.

This traditional design was used originally to store your Sunday bonnet. Today it makes the perfect place to store your treasured item (s). This basket begins with a slotted wooden round base. Emphasis will be on maintaining the round shape then creating a round top to fit.

SATURDAY CLASSES

8 hr. (8am – 5 pm)

6 hr. (9am-4pm)



VENETIA TOO

\$85 ADVANCED

SUSAN BAXTER

8 hrs. 8.75" x 4.5"

Venetia Too is a basket that utilizes traditional weaving techniques in new and different ways. It starts with a 4" acrylic bloom base to get the party started. Chase weave with 4-rod wale brings a sense of excitement that moves into a 4-strand braid. The border mixes things up by combining a traditional Japanese core border with some new moves for a completely different look.



CHECKER CANISTER

\$170 Adv. Beg.

DENISE BENDELEWSKI

8 hrs. 6" x 6"

Students will weave on an acrylic mold using hardwood staves and natural and dyed weavers. Students will chase weave and over/under weave to create a checker pattern. Contact teacher for color choices.



ELEGANT PURSE

\$195 ADVANCED*

BONNIE GALE

8 hrs. 6"W x 10" L x 8"H

This willow basket is made with the unique Spanish Catalan base. Students will be provided with a prepared and dried oval hoop into which rods are woven which then become the stakes of the basket. Bottom waling is followed by a choice of weaves including French slewing with two color rods or zig zag weave (shown in photo). The top of the basket includes some packing for a curved top and border. A good selection of naturally colored willows will be available. The fee includes prepared leather straps made by the instructor. *Advanced experience in weaving willow is highly recommended.

TOOLS: sharp pruning shears, 12" ruler, an old bath towel, knife, bodkin or awl, and rapping iron or spoke weight.

SATURDAY CLASSES

8 hr. (8am – 5 pm)

6 hr. (9am-4pm)



DESK SET

\$85

All Levels

PEGGY McCARSON 8 hrs. Dimensions below

The Desk Set includes 3 baskets to help keep your desk organized. The File basket (10"x13"x3") holds papers, file folders, notebooks. The Envelope basket (10"x3"x5") holds letters, envelopes, and mailing supplies. Store your pencils, markers, rulers in the Utensil basket. Weavers will learn to make square corners, insert overlays, and weave a folded rim. Color choices include the shown blue, purple, gray or black (select on class choices form). Paper flowers embellish the baskets. Weavers may have to finish the Envelope basket outside of class.



PIGGYBACK PRIME

\$115 Intermediate

MARILYN PARR

8 hrs. 13½" L x 9½" W x 20" H
With handle

This basket is #4 in the Piggyback series. It is woven on a rectangle wood base and will be weaver-ready with glued in spokes. Methods of weaving that will be used are the following: twine, triple twine with arrow triple twine, overlays, and stack weave, along with shaping as you weave.



A WAXY SET UP

\$85

Intermediate

LINDA SCHERZ

8 hrs. Taller is 2"H and 2 ¾" dia.

The inspiration came from Linda's 'It's A Set Up' in cotton cord. Students will weave a waxed linen base and make a waxed linen foot that will upright the spokes. Woven with three colors of waxed linen and ribbon accent between the patterns. Learn how the set up creates the different patterns. The rim is a double spoke braided rim. Techniques include triple twining, completing a row and setting up for next, spiral and stack pattern, and shaping. Experienced students can weave the taller basket.

Tools: small embroidery scissors, waxed linen packing tool with pointed tip, tape measure. A personal light and magnifying glasses may be helpful.

SATURDAY CLASSES

8 hr. (8am – 5 pm)

6 hr. (9am-4pm)



OLIV FALL

\$85

Intermediate

LINDA SCHERZ

8 hrs.

3" dia. x 1 3/4" H

This basket was designed with color play and technique in mind. The basket is twined and quad twined accent with waxed poly and delica beads. Linda will demonstrate and teach you her techniques for making the basket including completing a row, setting up for the next row, color change, shaping, the braided rim and taking care of the ends.

Tools: small embroidery scissors, waxed linen packing tool with pointed tip, bead tray, tape measure. A personal light and magnifying glasses may be helpful.



VERTIGO 2020

\$70

Intermediate

CHERYL THOMAS

6 hrs.

4"H x 11" diameter

Vertigo 2020 is woven with flat and flat oval reed on a wood base with a Fibonacci twill pattern. Some twill experience is very helpful. Optional: fast-drying glue.



SOUTHWEST SPIRIT

\$80

Beginner

JANE TOLAR

8 hrs.

5" x 1 3/4"

Create a useful, sturdy basket on a desert-inspired clay center, with Muhly grass and Brazilian cord. First, design the thread border around the clay center. Then learn to handle and manage this accessible, non-invasive coiling material (*Muhlenbergia capillaris*) as the basket takes shape. Smooth transitions in 6 rows of 3-color diamond stitches will be emphasized. Design choices of epoxy clay center with fired copper medallion inlay and thread colors. Sewing needle and Brazilian poly cord included.

TOOLS: Small sharp scissors, small needle nose pliers, small ruler are needed, and small diagonal flush cutters if you have them.

SATURDAY CLASSES

8 hr. (8am – 5 pm)

6 hr. (9am-4pm)



AUTUMN

\$85 High Intermediate

PAMELA WILSON 8 hrs. 13" L x 11" W x 6 ½" H

The basket begins by inserting flat oval spokes into a 7" x 10" wooden base with the help of a template. Several rows of three rod wale secures the spokes. The basket is woven in spaced dyed autumn colors and dark green round reed for accent; rim is dyed reed and waxed linen lashing. Techniques include 2/1 and 2/2 twills, overlays, and twined arrows. Students should be confident doing three rod wale. Usual basket tools.



TREASURE

\$70 Intermediate

PAMELA WILSON 8 hrs. 11" L x 9" W x 6 ½" H

Students will insert flat reed spokes into a 5" x 8" wooden base using a template. Techniques include three rod wale in natural and dyed round reed; French randing; chain stitch in 2 colors of round reed for interest. The upper section of the basket has an interesting weave in 2 sizes of flat oval, similar to Japanese wave weave. Rim has an optional overlay and standard lashing.

Students should be proficient in three rod wale. Kit colors choices: Royal Blue or Teal

Usual basket tools.



ROANOKE HARVEST TIME

(DOUBLE WALL)

\$90 Intermediate

JUDY WOBBLETON

8 hrs. 15" H x 12" dia.

This sturdy double wall basket is woven with a pushed-up center base. The inner wall woven with the traditional over under pattern becomes the mold for the exterior wall of the basket. Accent color is added to both walls of this basket. Students will attach a foot to the basket and finish with a wooden handle.

TOOLS: Two spoke weights are recommended.

SATURDAY (8am – 5pm) and SUNDAY (8am – 12noon)

SATURDAY AND SUNDAY



RE'COLTER \$95 Advanced Beginner

RAMI McKINNEY **12hrs.** 10" W x 15" L x 10" H

A 10" x 15" oval hoop, a 10" round hoop, 11/64" flat oval, 1/4" oval-oval, #6 round reed are used to weave up this gathering style ribbed basket. Only basic weaving tools and a lot of patience are required. Learn how to make a god's eye, insert ribs, and how to do turn backs while weaving a ribbed style basket. In this class, you will be taught to see the shape while weaving it. You may NOT finish this basket during class time but will have all ribs inserted and just some weaving to be done.

BASKET TOOLS TO REMEMBER!

- Scissors
- Packers
- Spoke weight
- Needle nose pliers
- Angle cutters
- Scrapers / scarfing tools
- Knife
- Measuring tape
- Cable ties, clips, clothespins
- Spray bottle
- Towel
- Apron
- Water container
- Your Odyssey name badge holder
- Return address labels for raffle

SUNDAY CLASSES

8 am – 12 noon (except as noted)



TRIVET FUN

\$40 All Levels

SUSAN BAXTER
8-9" x .25"

2 hrs. (8am-10am)

Want to see what all the round reed excitement is about? Trivet Fun starts with a 3D printed jig and uses twining to secure the #3 round reed spokes and 3-rod wale to create the body. Depending upon the student's skill level, either a "Trac" or "Chira" border will be added. The jig is included and additional reed for more trivets will be available.

Tools: Spray bottle, Small Awl



ZIG ZAG

\$60 All Levels

DENISE BENDELEWSKI

4 hrs. 3"H x 3" dia.

Using a class mold, students will weave using natural cane staves and black weavers in a zig zag pattern.



POLISH BREAD BASKET

\$98 Adv. Beginner

BONNIE GALE

4 hrs. 3" tall x 13" dia.

The Polish Bread Basket is made in willow and is based on the Polish Tatzca basket. Six groups of rods are woven into a hexagon and then the rods are curved around and woven. A contrasting outer rod is provided for an interesting design. Full color instructions and diagrams are provided.

TOOLS: sharp pruning shears, carpenter's folding ruler, old bath towel, spray bottle, bodkin or awl, rapping iron or spoke weight.

SUNDAY CLASSES

8 am – 12 noon (except as noted)



SUNFLOWER

\$40 All Levels

PEGGY McCARSON

4 hrs. 9" dia. x 5"H

The center Sunflower is wood burned and painted by Peggy. Spokes are inserted and held in place with rows of natural and yellow 3-rod wale. Weaving is from the outside with the good side of the reed on the inside of the basket. Start-stop weaving is featured with hints given for shaping. The yellow lashing matches the middle weavers.



DOUBLE HANDLE CARRIER

\$50 All Levels

PEGGY McCARSON

4 hrs. 14"L x 8"W x 4"H

Double swing handles are stained and inserted into a filled base. The fillers are dyed, woven vertically, and tucked in to make "chicken feet". Techniques are given to make square corners. The dyed weavers match the fillers. Double lash the rim and add skates for strength. Color choices are navy or brown.



COFFEE TREE

\$74 Adv. Beginner

MARILYN PARR

4 hrs. 13 1/2" dia x 14 1/2"H

Perfect for a coffee bar or counter. Holds 6 mugs and multiple K-cups in the basket. Coordinates perfectly with Coffee Central and Spoonful of Sugar, available in vending or online. Focus will be on shaping. Also woven in the basket is a row of corrugated tin ribbon. Base will be weaver-ready with spokes glued in for class.

SUNDAY CLASSES

8 am – 12 noon (except as noted)



TOTE TWO WAYS

\$65 Intermediate

LINDA SCHERZ

4 hrs. 4½" W x 11½" L x 8" H

This handy tote designed by Linda for her new handle idea. Students weave a plain weave base with the pre-cut spokes. The pattern up the sides is simple, natural reed with paracord and ribbon accent. The ribbon is supported with an ash or maple weaving strip. A basic rim with paracord accent filler. The webbing handle for easy carry two ways that students will learn how to make. Color choices available for paracord and ribbon. Buckle will be available in black or tan.

Tools: Pencil, tape measure, scissors, diagonal cutters, spring type clothespins, awl or Tupperware orange peeler, heavy duty packing tool, cable ties, knife or scarfing tool, hand towel, water bucket



PEG DOLL ANGEL \$22 All Levels

CHERYL THOMAS 2 hrs. (8am-10am) 5½" H

The Peg Doll Angel is woven with flat oval reed and techniques include triple twine, continuous weave, and a braided border to finish. Embellishments include pip berries, rusty bow, and moss. Faces will be painted already but blank faces will be available. A quick and easy weave!



COUNTRY CHRISTMAS \$40 Adv. Beg.

CHERYL THOMAS 4 hrs. 4"W x 10"L x 10"H w/ handle

This cute little basket is woven with flat & flat oval primitive colors. Techniques include a filled in bottom and paired triple twining. There will be a choice of tags for the embellishment.

SUNDAY CLASSES

8 am – 12 noon (except as noted)



ALL THAT GLITTERS ORNAMENT \$35 Beginner

JANE TOLAR 3 hrs. 3½" dia.

Make a holiday ornament on a 3" slice of natural maple or birch, stitching long leaf pine needles with colorful Brazilian cord. This is great beginner coiling project; most will finish in less than 3 hours. Using pine needles with attached sheaths is a new technique and adds color, texture and dimension. Kit includes treated long leaf pine needles, maple or birch slice rimmed in sisal, poly cord, sewing needle, brass gauge, and a trove of beads. Color choices available. **TOOLS:** sharp scissors, small needle nose pliers.



WOVEN CRUET \$45 Intermediate

PAMELA WILSON 4 hrs. 3 ½" dia. x 12" H

The wine bottle basket is woven in #2 dyed round reed and features a pretty base. The sides have both twining and 3-rod wale. The instructor will show an easy way to do the side lattice work. The top is finished with loops. Students should know how to twine and do 3-rod wale. The instructor will bring empty wine bottles for the students. **TOOLS: Alligator clips and a spoke weight are a must** along with usual weaving tools.



DEMYSTIFYING TWILLS \$45 Adv. Beg.

PAMELA WILSON 4 hrs. 4-5" square

It can be daunting to learn how to weave twills in 3-D, but learning how with a flat mat can make it a lot easier. The instructor will have both written and charted patterns for several simple to more complex twills and students may pick the twill they want to make. The mat will be woven in 2 colors of 4 mm Hamburg cane (which is very flexible) and finished with twined waved linen thread.

TOOLS: A spoke weight is a must! small clips, packers, and the usual weaving tools.

SUNDAY CLASSES

8 am – 12 noon (except as noted)



PEPPERMINT TWIST \$65 Adv. beginner

JUDY WOBBLETON 4 hrs. 12½" H x 8" dia.

Students will start with a wooden slotted base. Basket features a continuous twill. Twining off sets a natural strip. Basket is finished with an oak handle. This easy twill is perfect for a student's first twill experience.



MAINE COON WALL BASKET \$50 Beginner

JUDY WOBBLETON 4 hrs. 5 ½" W x 8" L x 9 ½" H

Woven in the style of a cat head, this sturdy wall basket is all about shaping. Basket is accented with colored reed and finished with a sturdy wooden handle.